



# THE DEVELOPER'S CONFERENCE

## **Migrando para cloud AWS**

**Leonardo Azize Martins**  
Cloud Infrastructure Architect - AWS

# Schedule



- Migration Process
- Discovery and planning
- Migration plan
- Migration tools
- Validation

# Migration Process



Discovery



Analyze



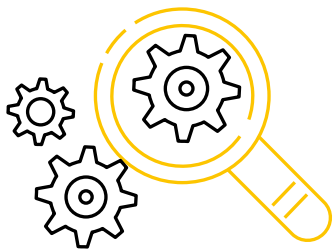
Migration  
Plan



Migrate & modernize



Validation



# Discovery

# AWS Application Discovery Service (ADS)



**Identify  
application inventory**



**Map application  
dependencies**



**Baseline system and  
process performance**

# AWS Application Discovery Service (ADS)



THE  
DEVELOPER'S  
CONFERENCE

Agents deployed on source hosts; agentless for VMWare

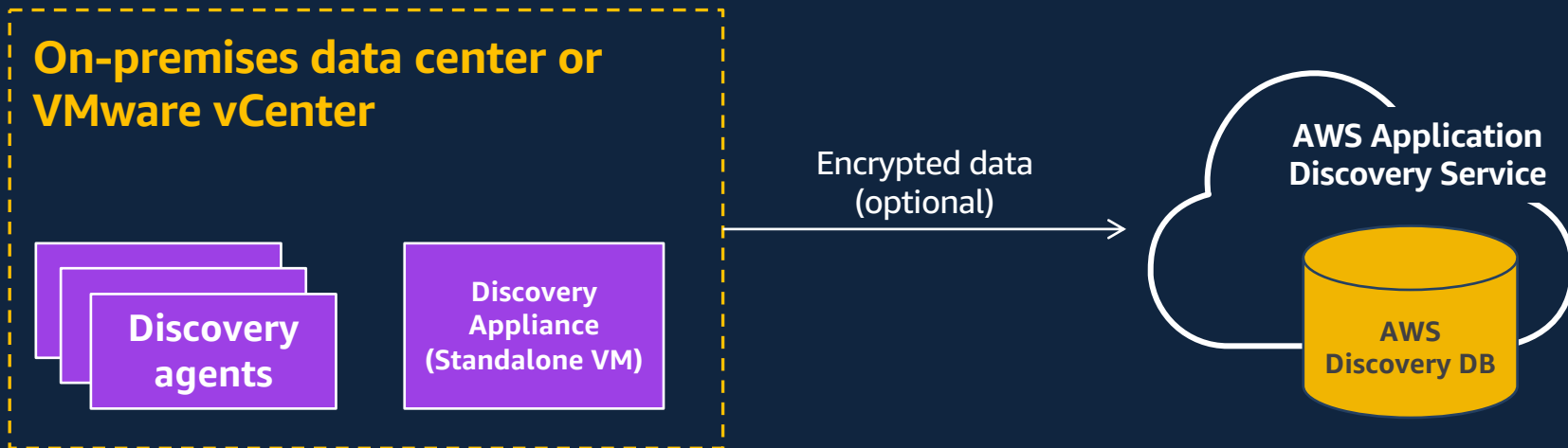
- Windows and Linux support

Capture system inventory, performance, and dependencies

Capture and store secured data to AWS

API access to discovered assets

Application awareness and identification



# How to perform discovery



## Capture and visualize system inventory, performance, and dependencies

### Data center



### Capture

Agents  
(Windows/Linux)



Discovery connector  
(vCenter)



Import from  
existing sources



Encrypted  
data



Application  
Discovery Service

### Estimate EC2 costs



AWS Migration Hub

### Analyze discovery data



AWS Migration Hub



Amazon Athena

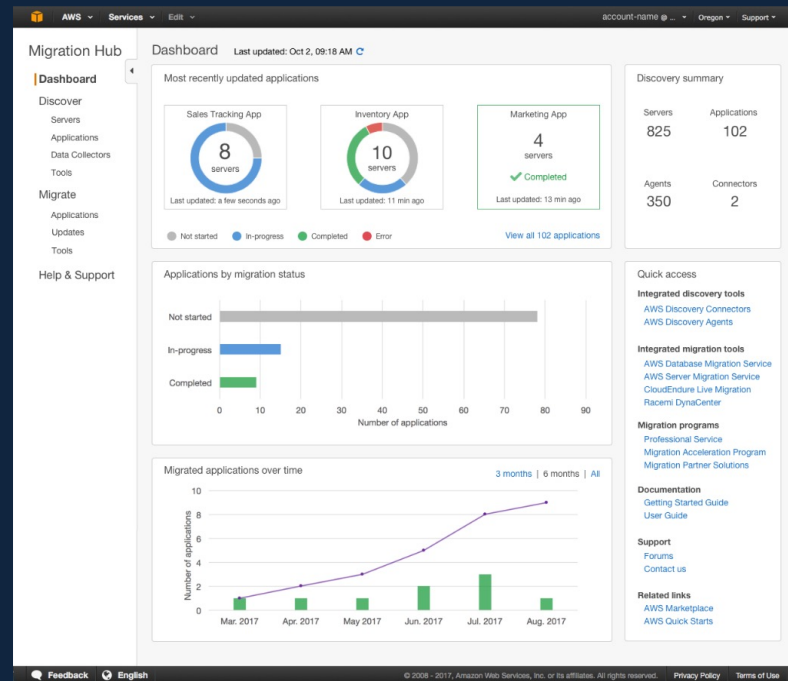


Amazon QuickSight

# AWS Migration Hub



- Track the migration status of your applications across multiple tools in one place
- Discover using AWS ADS or Import discovery data from existing sources
- Use the migration tools that best fit your needs—AWS or Partner tools integrated
- Available to all AWS customers at no additional charge





# Visualize discovery data

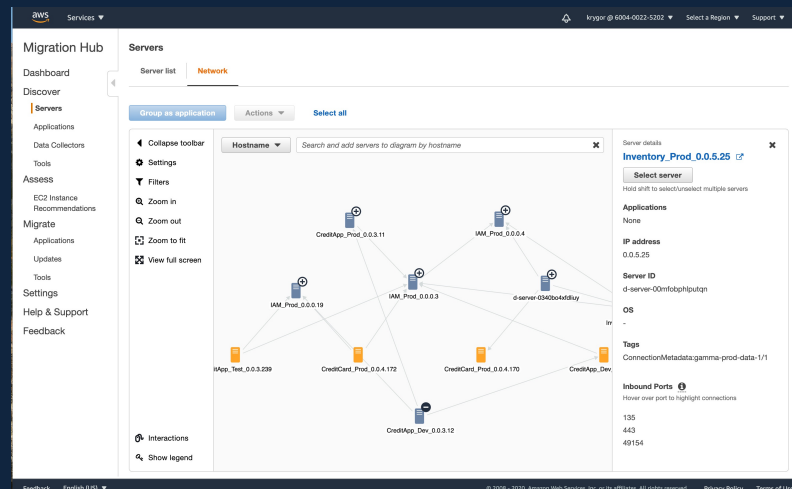
Migration Hub network visualization (AWS Discovery Agent only)



THE  
DEVELOPER'S  
CONFERENCE

Accelerate planning by making server  
discovery data planning-ready

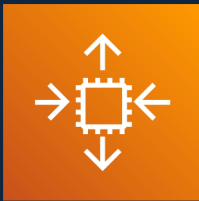
- ➔ Visually identify server dependencies
- ➔ Identify the role of a server
- ➔ Data-driven approach to grouping servers as applications
- ➔ Use output to plan migration strategies, build migration waves
- ➔ Free to use, reducing migration tooling costs





# Analyze

# Cost control



EC2 Auto Scaling



AWS Instance Scheduler



Reduce your  
operational costs

# EC2 Instance right-size



Import server inventory, specs, and utilization information **or** collect using the Discovery Agent or Connector to obtain EC2 cost estimation in the AWS Migration Hub

Get lowest cost EC2 Instance recommendations for migrating on-premises VM's and servers to AWS

The screenshot shows the AWS Migration Hub interface for 'Export EC2 instance recommendations'. The left sidebar contains navigation links: Migration Hub, Dashboard, Discover (Servers, Applications, Data Collectors, Tools), Assess (EC2 Instance Recommendations), Migrate (Applications, Updates, Tools), Settings, Help & Support, and Feedback. The main content area is titled 'Export EC2 instance recommendations' and includes a sub-header 'Generate right-sized EC2 Instance recommendations based on current server specifications and utilization data to optimize cost and to plan your migration.' Below this, there are two main sections: 'Sizing preferences' and 'Instance type preferences'. The 'Sizing preferences' section has a dropdown for 'Current server specification' and two radio buttons: 'Direct match' (selected) and 'Custom match'. The 'Instance type preferences' section has a dropdown for 'Region' (set to 'EU (Frankfurt)'), radio buttons for 'Tenancy' (selected: 'Shared Instances'), and radio buttons for 'Pricing Model' (selected: 'Reserved'). There are also dropdowns for 'contract term' (set to '1-Year Standard') and 'payment' (set to 'No Upfront'). At the bottom, there is a section for 'EC2 instance type exclusions' and a note: 'Note: The results of this analysis only provide recommendations and do not obligate you to any further actions. Selections and preferences for your EC2 instance(s) are made at your sole discretion.' A blue button labeled 'Export recommendations' is at the bottom right.



# Migration Plan

# Migration Plan



On-line



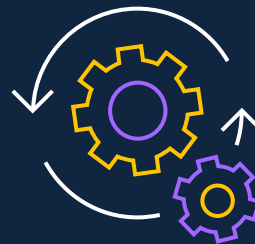
Off-line

# Migration Plan



---

Big-bang



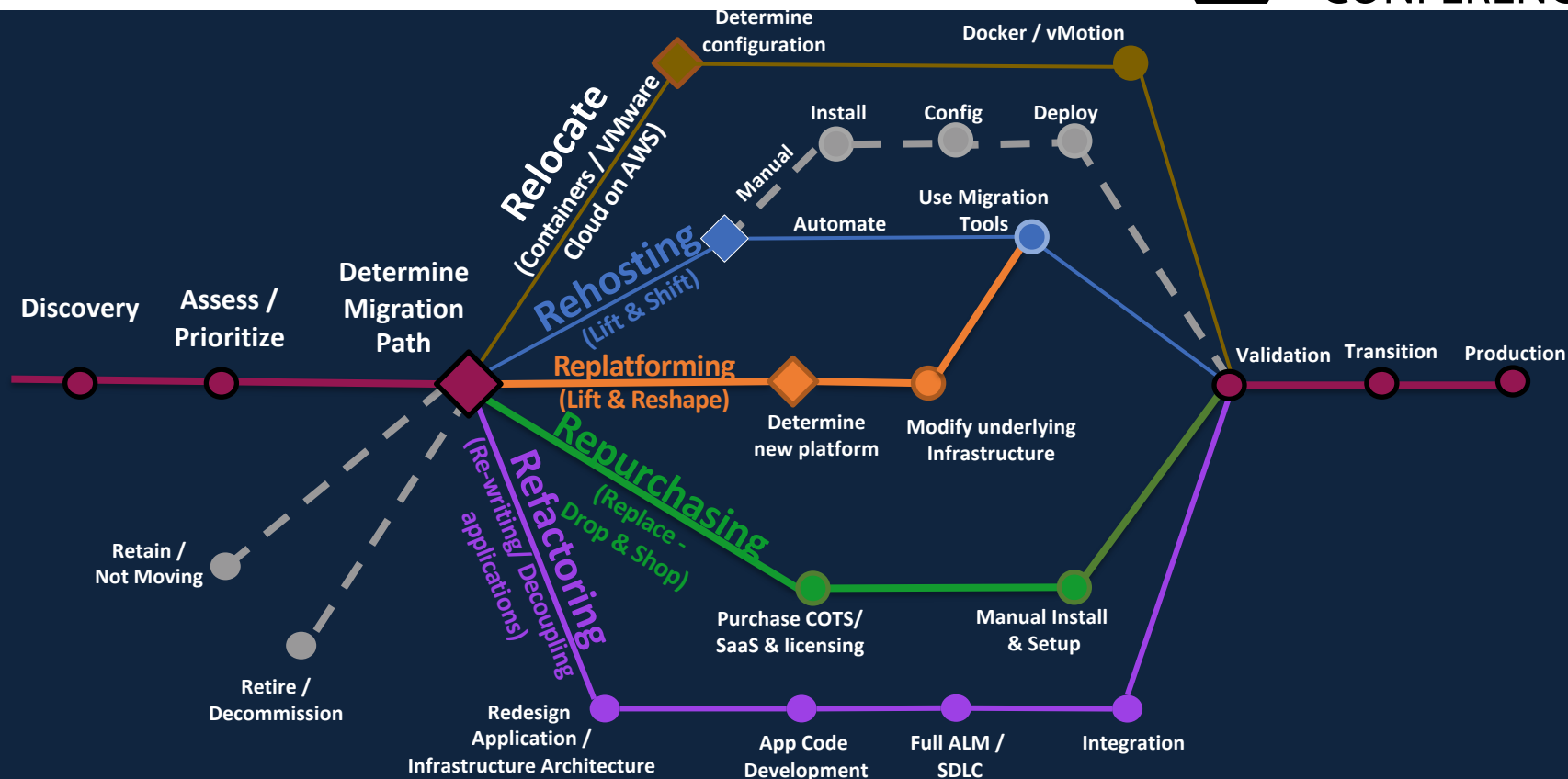
---

Waves

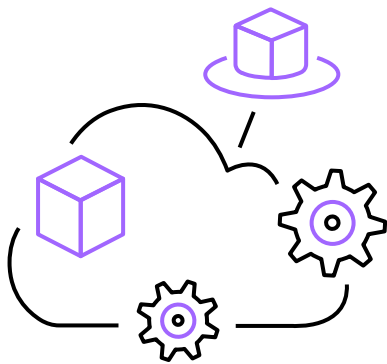
# Migration patterns (7Rs)



THE  
DEVELOPER'S  
CONFERENCE





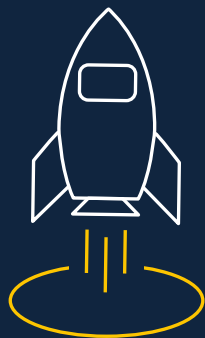


# Migrate & Modernize

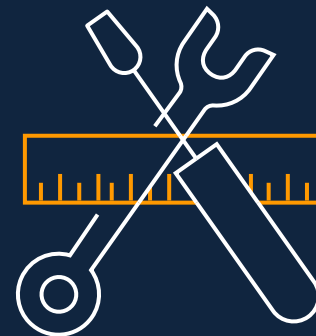
# Application / Data Migration



THE  
DEVELOPER'S  
CONFERENCE



Pre-requirements

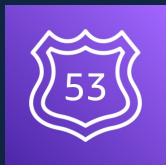


Tools

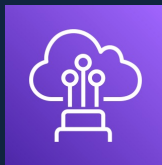
# Pre-requirements



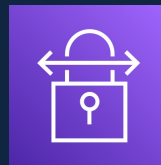
THE  
DEVELOPER'S  
CONFERENCE



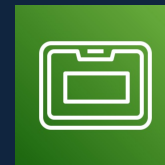
Amazon Route 53



AWS Direct Connect



AWS Site-to-Site VPN



AWS Snowball

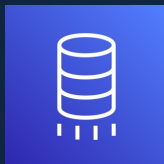


Firewall

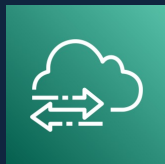


Credential

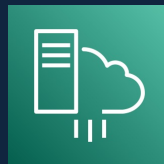
# Tools



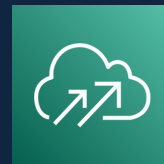
AWS Database Migration  
Service (AWS DMS)



AWS DataSync



AWS Server Migration  
Service (AWS SMS)



CloudEndure  
Migration



VM Import / Export



# Validation

# Validation



**Secure**

Compliance and security requirements



**Automated**

Use automation tests; integration tests; regression tests



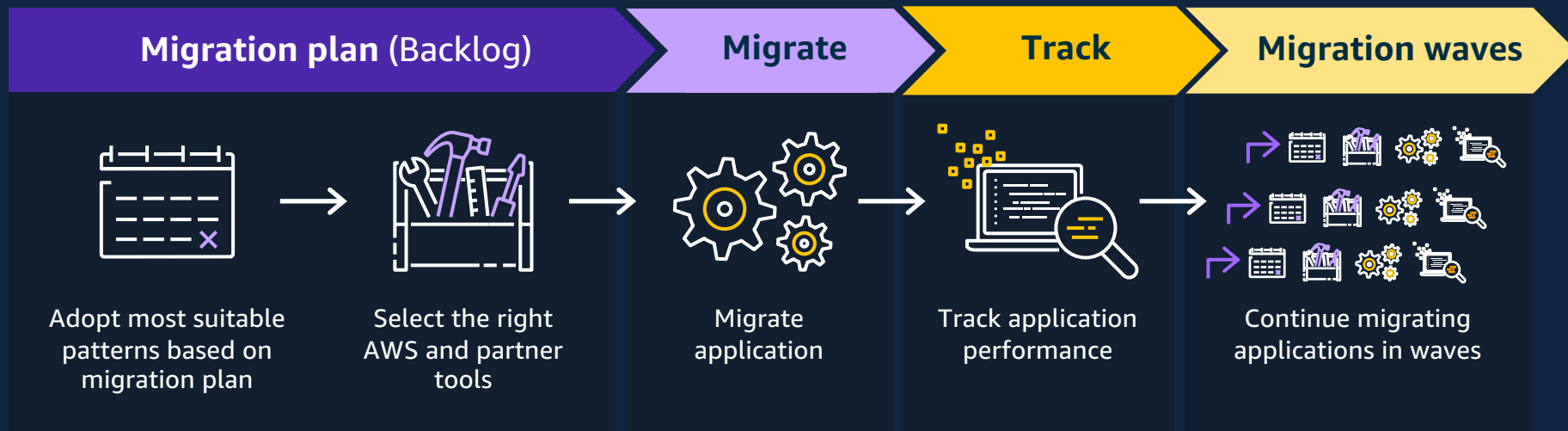
**Reliable**

Business rules validated by business team

# Application migration workflow



THE  
DEVELOPER'S  
CONFERENCE





**Thank you!**







# THE DEVELOPER'S CONFERENCE